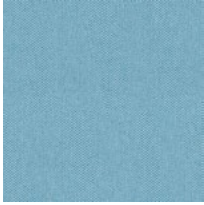


CSE | Era

PRICE GROUP | PREISGRUPPE | GROUPE DE PRIX

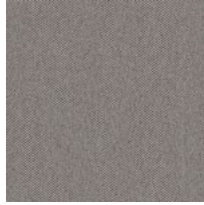
2



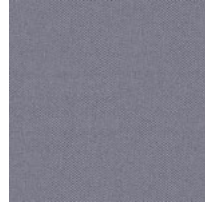
CSE20



CSE19



CSE02



CSE11



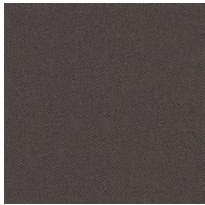
CSE01



CSE03



CSE13



CSE21

Composition:

100% polyester. Non metallic dyestuffs

Weight:

320 g/m²

Abrasion resistance:

≥100 000 Martindale cycles

Flammability:

EN 1021-1, EN 1021-2, BS 7176 low hazard

Material:

100% Polyester. Nicht schwermetallhaltige Farbstoffe

Gewicht:

320 g/m²

Scheuerfestigkeit:

≥100 000 Touren Martindale

Brandschutznormen:

EN 1021-1, EN 1021-2, BS 7176 low hazard

Composition :

100% polyester. Teintures non métalliques

Poids :

320 g/m²

Résistance à l'abrasion :

≥100 000 Cycles Martindales

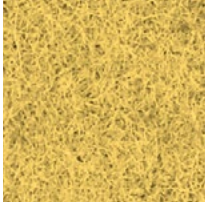
Résistance au feu :

EN 1021-1, EN 1021-2, BS 7176 low hazard

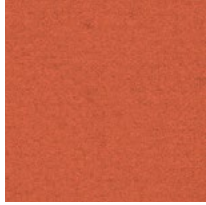
CUZ | Blazer

PRICE GROUP | PREISGRUPPE | GROUPE DE PRIX

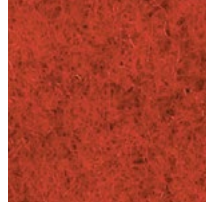
4



CUZ58



CUZ85



CUZ90



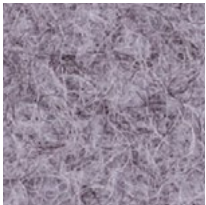
CUZ21



CUZ1Z



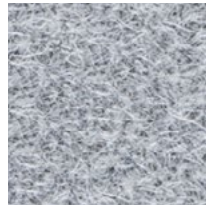
CUZ02



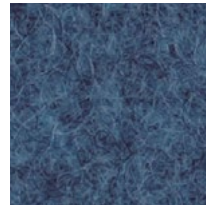
CUZ1S



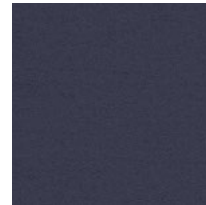
CUZ28



CUZ1E



CUZ1W



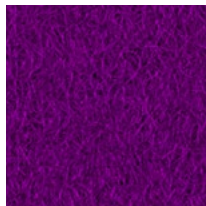
CUZ1Y



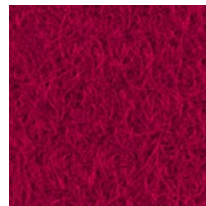
CUZ1L



CUZ1P



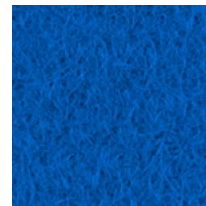
CUZ2A



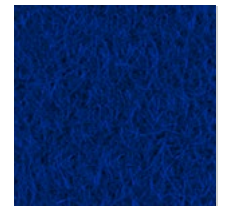
CUZ89



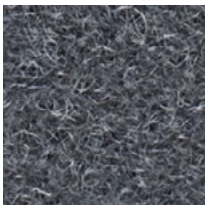
CUZ18



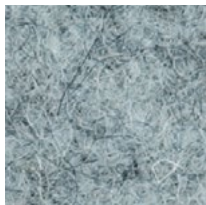
CUZ26



CUZ09



CUZ30



CUZ1R

Composition:

100% virgin wool. Non metallic dyestuffs

Weight:460 g/m²**Abrasion resistance:**

50 000 Martindale cycles

Flammability:EN 1021-1, EN 1021-2, BS 7176 low hazard,
UNI 9175 Classe 1.IM**Other:**Environmental: EU Ecolabel Certified.
Renewable and compostable**Material:**100% Schurwolle. Nicht schwermetallhaltige
Farbstoffe**Gewicht:**460 g/m²**Scheuerfestigkeit:**

50 000 Touren Martindale

Brandschutznormen:EN 1021-1, EN 1021-2, BS 7176 low hazard,
UNI 9175 Classe 1.IM**Sonstiges:**Umweltfreundlich: EU Ecolabel zertifiziert
Erneuerbar und kompostierbar**Composition :**

100% pure laine. Teintures non métalliques

Poids :460 g/m²**Résistance à l'abrasion :**

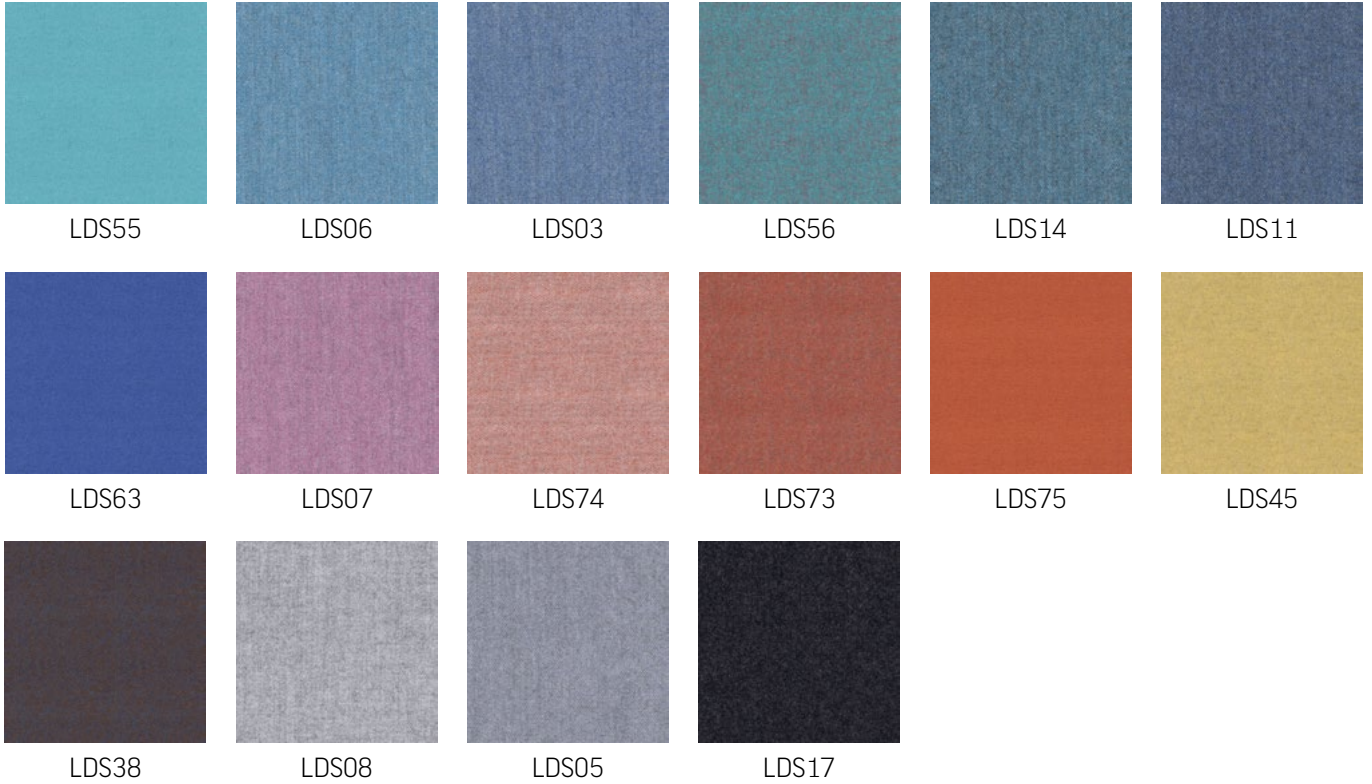
50 000 Cycles Martindales

Résistance au feu :EN 1021-1, EN 1021-2, BS 7176 low hazard,
UNI 9175 Classe 1.IM**Autres :**Favorable à l'environnement : certifié EU Ecolabel,
recyclable et compostable

LDS | Synergy

PRICE GROUP | PREISGRUPPE | GROUPE DE PRIX

4

**Composition:**

95% wool, 5% polyamide

Weight:400 g/m²**Abrasion resistance:**

100 000 Martindale cycles

Flammability:EN 1021-1, EN 1021-2, BS 7176 low hazard,
UNI 9175 Classe 1.IM, NF D 60-013 AM18,
Önorm B 3825, Önorm A 3800-1 Q1**Material:**

95% Wolle, 5% Polyamid

Gewicht:400 g/m²**Scheuerfestigkeit:**

100 000 Touren Martindale

Brandschutznormen:EN 1021-1, EN 1021-2, BS 7176 low hazard,
UNI 9175 Classe 1.IM, NF D 60-013 AM18,
Önorm B 3825, Önorm A 3800-1 Q1**Composition :**

95% laine, 5% polyamide

Poids :400 g/m²**Résistance à l'abrasion :**

100 000 Cycles Martindales

Résistance au feu :EN 1021-1, EN 1021-2, BS 7176 low hazard,
UNI 9175 Classe 1.IM, NF D 60-013 AM18,
Önorm B 3825, Önorm A 3800-1 Q1